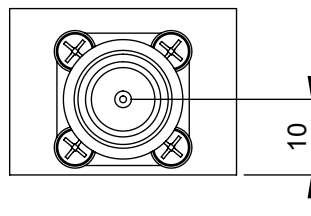
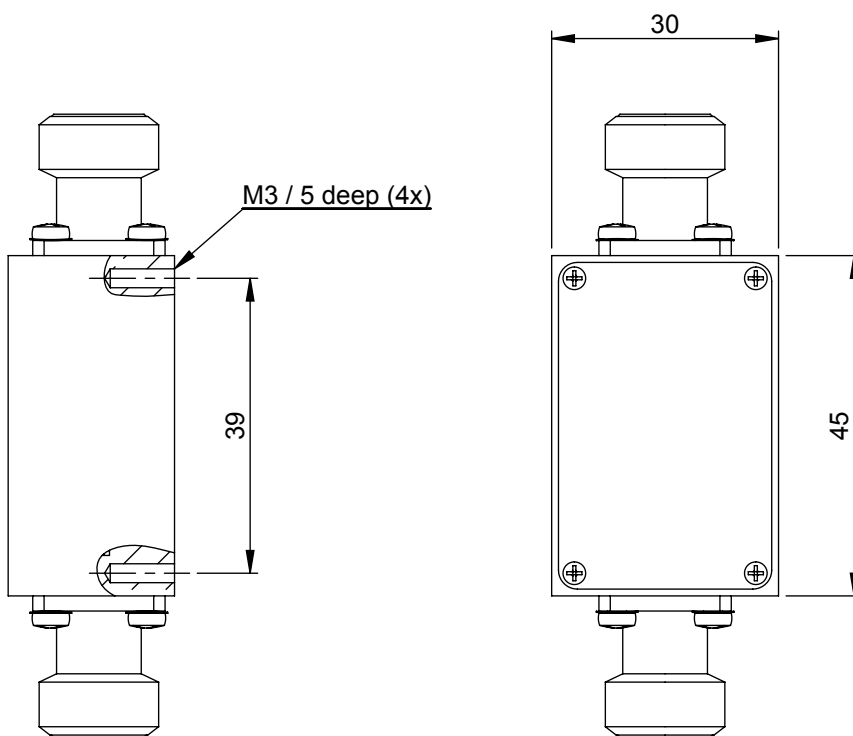


A

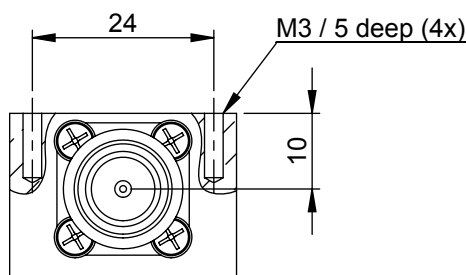


B



C


D



E

Pos.Nr.	Menge	Ident-Nr.	Bezeichnung
1	1	24368	GK-BPF-N-N
2	1	24297	D-BPF
3	4	10164	SES-TAP-M2x6-3
4	2	15058	N-B-50-4
5	8	10242	LKS-M2.5x6 / DIN7985 A2
6	8	10345	FES-M2.5 / DIN137A A2
7	4	10232	LKS-M2x4 / DIN7985 A2

F

Oberfläche		SurTec 650 (chromitAL)		Rohm./Halbzeug		
Massstab		Det. Massstab		Toleranz		
1:1				± 0.2		
				Datum		
				Name		
				Bearb. 1.10.14		
				Gep. G.Jaumann		
				Freiga. 08.10.15		
				Jaumann		
				Band Pass Filter 2400 - 2500MHz FIL-BP2450		
				24193-Z01		
0		8.10.15		G.Jaumann		
Zust.		Änderung		Datum		
				Name		
<div style="text-align: center;">  </div>						Blatt 1 von 1
Schutzvermerk ISO16016 beachten						