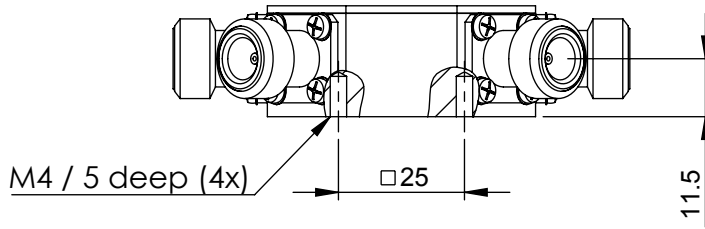
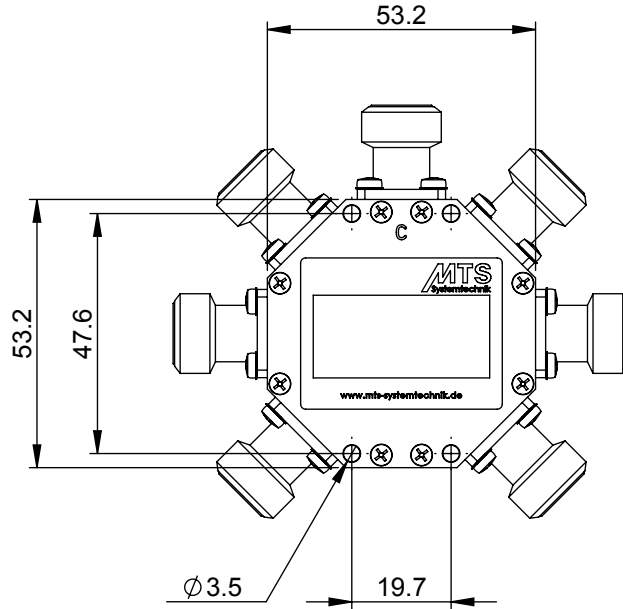


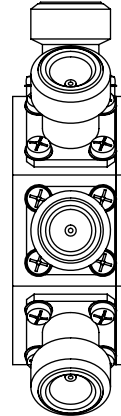
A



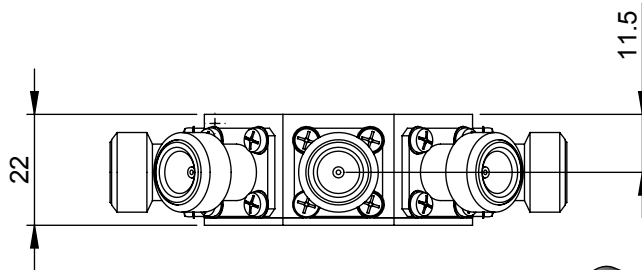
B



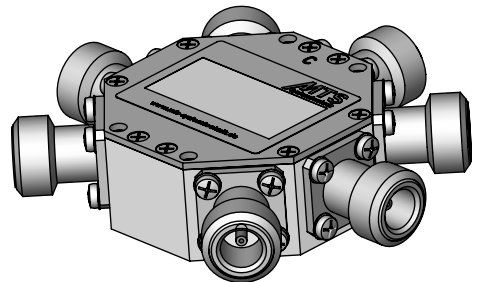
C



D



E



F

Oberfläche SurTec 650 (chromitAL)				Rohm./Halbzeug			
Masstab 1:1,5		Det. Masstab		Toleranz ± 0.2		Werkstoff Alu	
				Datum	Name	Leistungsteiler	
				Bearb. 16.6.15	G.Jaumann		
				Gepr.			
				Freiga. 16.06.15	Jaumann	RS6-588P-3G	
						25080-Z01	
						Blatt 1	
Zust.	Änderung	Datum	Name	von 1			
				Schutzvermerk ISO16016 beachten			